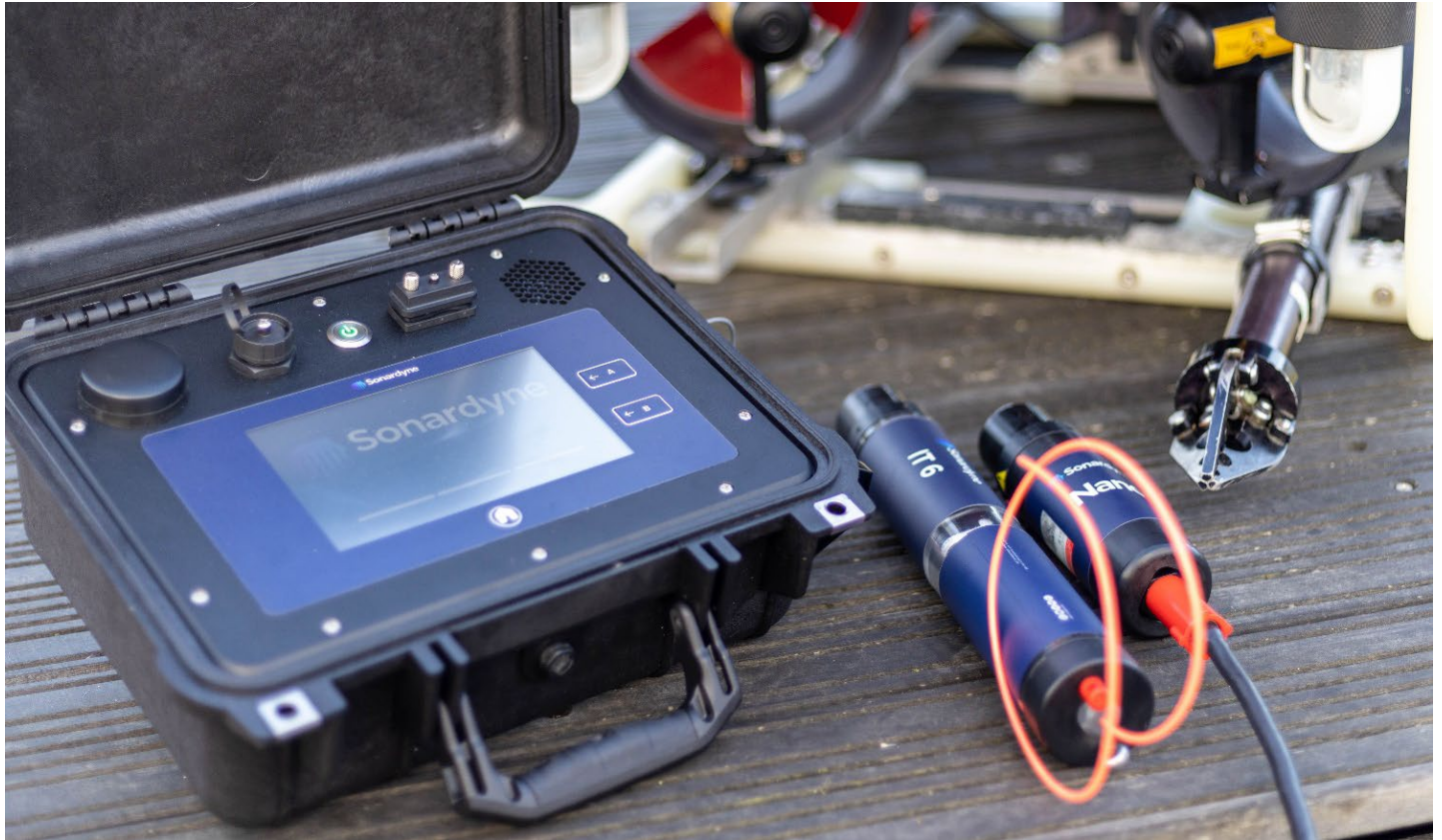


Datasheet

Deck Topside for initiation



Deck Topside is a rugged and portable solution for commanding and controlling of Sonardyne Initiation Transponder 6 devices during UXO/MCM and demolition operations.

Designed to include all the functionality required by an operator in harsh environments, Deck Topside is rugged, and perfectly suited to harsh marine environments. It is IP67 rated when closed and IP66 when open and being operated.

Featuring a high brightness, full colour resistive 7-inch touch screen display that can be used in all weather conditions and an easy-to-use user interface for configuration and operation of IT 6s.

As touch screens are not suitable for every offshore operation, physical buttons are used for

critical tasks such as arming and initiating an IT 6.

Power comes from an 12/24 V dc external input. When no external power is available, a Lithium-Ion rechargeable battery provides over 8 hours of continuous operation.

Deck Topside features onboard storage so every operation a user undertakes can be logged and exported for reporting and analysis.

A cabled Nano dunker provides the secure acoustic communication link between the surface and IT 6. It plugs it into the transceiver port on the side of Deck Topside and is dunked (via its own cable) over the side of a vessel. A 10 m cable is provided as standard (20 m extension cables are also available).

Key features

- Rugged, portable design
- Environmentally rated to IP67
- Intuitive user interface
- All-weather 7-inch resistive touch screen
- Physical buttons for safety critical operations
- 8 hours battery life or 12/24 V dc input
- Supplied with cabled Nano dunker (10 m deck cable)
- Onboard storage and data logging
- GNSS receiver
- Future upgrade to control of RT 6 acoustic release transponders

Specifications

Deck Topside for initiation



Feature	Specification
Screen	7" resistive touch screen 1000cd/m ²
Interfaces	Wi-Fi 2 x Ethernet connectors 1 x RS232/RS485 (to Sonardyne transceivers, including power out) 1 x 12/24 V dc power input connector 1 x USB for data export 1 x RS232 DB9 port
Buttons	Power/Home/2 x multi-function safety critical keys
Positioning	Built in GNSS
Sound	Built in speaker ¹
Power	12/24 V dc input 81 W max, 24 W charging, 8 W on external power, >8-hour lithium-ion battery (66 Wh)
IP rating	IP67 closed, IP66 open
Dunker cable	10 m
Operating temperature	-20°C to +55°C ²
Storage temperature	-20°C to +60°C
Additional tests	Salt fog testing
Dimensions (length x width x depth)	340 x 295 x 152 mm
Weight	4.8 kg
Options	Part number
Shallow Water Deck Kit, Release + Initiation	602-0203
Mid Water Deck Kit, Release + Initiation	602-0226
Deck Topside Spare, Release + Initiation	620-0717
Topside DC Power Cable 5 m	820-0473
Dunker Extension Cable 20 m	820-0462

¹ Future feature capability

² Battery charging only at +5 to +40°C