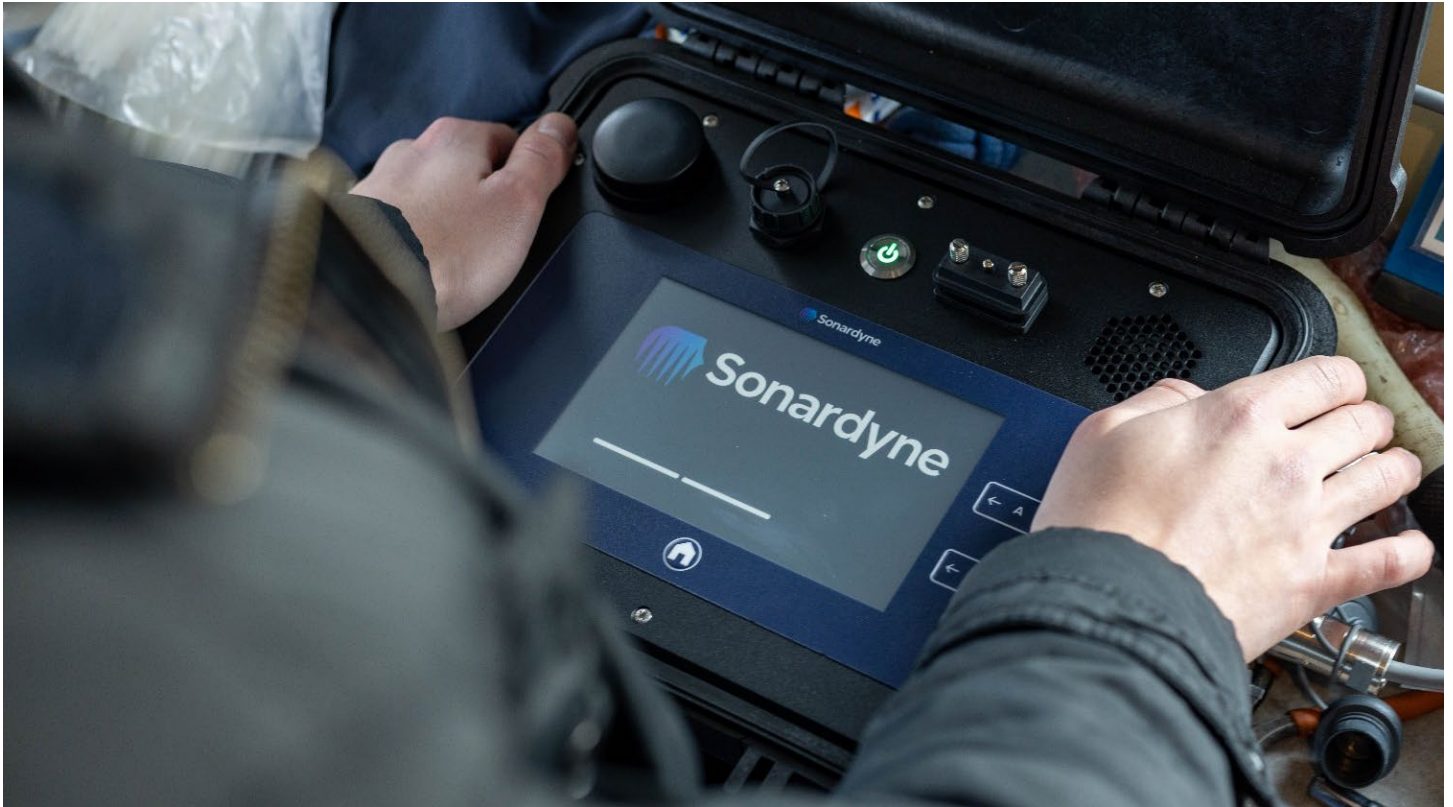


# Datasheet

## Deck Topside for release



**Deck Topside is a multifunctional, rugged and portable solution for control of Sonardyne release transponders.**

Designed to include all the functionality required by an operator in harsh environments, Deck Topside is rugged, and perfectly suited to harsh marine environments. It is IP67 rated when closed and IP66 when open and being operated.

Featuring a high brightness, full colour resistive 7-inch touch screen display that can be used in all weather conditions and an easy-to-use user interface for configuration and operation of release transponders.

As touch screens are not suitable for every offshore operation, physical buttons are used for critical tasks such as operating release mechanisms.

Power comes from an 12/24 V dc external input. When no external power is available, a Lithium-Ion rechargeable battery provides over 8 hours of continuous operation.

Deck Topside features onboard storage so every operation a user undertakes can be logged and exported for reporting and analysis.

An inbuilt GNSS allows precise drop positions of release transponders to be taken, which can then be exported to a PDF release report.

A choice of MF and LMF dunkers completes the acoustic communication link between the surface and a release transponder, forming a Shallow, Mid or Deep Water Deck Kit. They plug into the transceiver port on the side of Deck Topside and are dunked over the side of a vessel. A 10 m cable is provided as standard (20 m extension cables are also available).

### Key features

- Rugged, portable design
- Environmentally rated to IP67
- Intuitive user interface
- All-weather 7-inch resistive touch screen
- Physical buttons for safety critical operations
- 8 hours battery life or 12/24 V dc input
- Choice of different kits for different operational scenarios
- Onboard storage and data logging
- PDF release report generation
- GNSS receiver
- Upgrade to control Initiation Transponder 6
- Futureproofed Sonardyne topside

# Specifications

## Deck Topside for release



Feature	Specification
Screen	7" resistive touch screen 1000cd/m <sup>2</sup>
Interfaces	Wi-Fi 2 x Ethernet connectors 1 x RS232/RS485 (to Sonardyne transceivers, including power out) 1 x 12/24 V dc power input connector 1 x USB for data export 1 x RS232 DB9 port
Buttons	Power/Home/2 x multi-function safety critical keys
Positioning	Built in GNSS
Sound	Built in speaker <sup>1</sup>
Power	12/24 V dc input 81 W max, 24 W charging, 8 W on external power, >8-hour lithium-ion battery (66 Wh)
IP rating	IP67 closed, IP66 open
Dunker cable	10 m
Operating temperature	-20°C to +55°C <sup>2</sup>
Storage temperature	-20°C to +60°C
Additional tests	Salt fog testing
Dimensions (length x width x depth)	340 x 295 x 152 mm
Weight	4.8 kg
Options	Part Number
Shallow Water Deck Kit, Release	602-0175
Mid Water Deck Kit, Release	602-0179
Deep Water Deck Kit, Release	602-0180
Deck Topside Spare, Release + Initiation	620-0607
Topside DC Power Cable 5 m	820-0473
Dunker Extension Cable 20 m	820-0462
NFC Reader	620-0541

<sup>1</sup> Future feature capability

<sup>2</sup> Battery charging only at +5 to +40°C