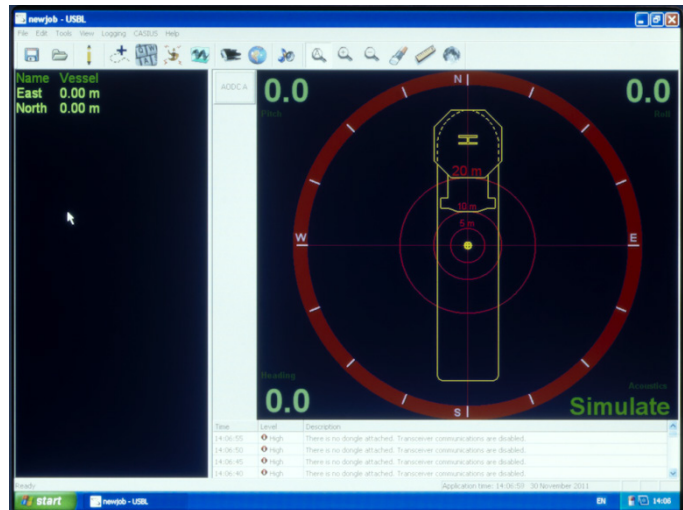


# Datasheet

## Surface Command Unit 2



### Description

The Type 8039 Surface Command Unit (SCU) is a portable command unit with integrated PC, sensor interface and rechargeable battery pack incorporated in a splash-proof case.

The SCU 2 has been upgraded with; a faster processor, more memory, solid state hard drive, a heat exchanger, Li-Ion battery packs, improved chassis and a LED backlit screen which provides a bright and crisp display even in sunlight.

The SCU 2 incorporates all the features of a rack mounted Surface Interface Unit (SIU), supplying power and communications to the transceiver.

Being completely portable enables operation of Scout and Scout Plus systems independently from almost any type of boat in the rain, tropical heat and snow.

The Scout software has been designed to be very easy and intuitive to operate with only basic user training required. Features include Wizards and Tools that guide an operator through the process of planning a job and configuring transponders in preparation for tracking.

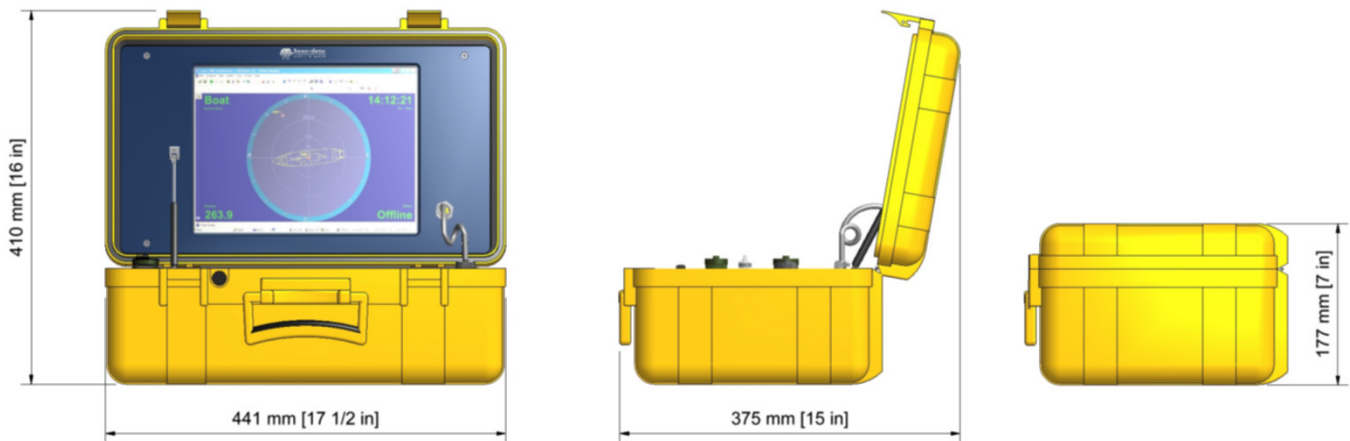
The User Interface shares a common look and feel with Sonardyne's latest generation of Ranger 2 software products thereby ensuring operator familiarity when switching between products.

### Key Features

- Interfaces to four external RS232 sensors e.g. VRU, GPS, and acoustic transceivers
- Fully self contained, PC, display and transceiver interface
- Allows operation of a Scout USBL from any size and type of vessel
- Environmentally protected to IP65
- Up to 4 hours operating life on internal battery pack
- Can be used with Sonardyne's 6G® product range for data retrieval

# Specifications

## Surface Command Unit 2



Feature	Type 8039								
Processor	Intel Atom N270								
Operating System	Windows®7								
RAM	2 Gb								
Hard Disk	240 Gb SSD								
Ports (Front Panel)	4 x RS232, 1 x USB 2.0, 1 VGA (Dual Screen) Transceiver (RS485 & 48VDC), Responder Trigger								
Battery	Internal Li-Ion (UN Transport Approved)								
Typical Battery Life	2-4 Hours								
Power Supply	12-16 V DC								
Display Panel	12.1" LED Backlit TFT 1024 x 768								
Dimensions (LxWxH)	444.5 mm (17.5") x 305 mm (12") x 178 mm (7")								
Weight	10 kg								
Environmental Specifications	<table border="0"> <tr> <td>Operating</td> <td>-10 to 55°C (14 to 131°F)</td> </tr> <tr> <td>Storage</td> <td>-40 to 70°C (-40 to 158°F)</td> </tr> <tr> <td>IP Rating</td> <td>IP 65</td> </tr> <tr> <td>Shock</td> <td>10 G acceleration peak to peak</td> </tr> </table>	Operating	-10 to 55°C (14 to 131°F)	Storage	-40 to 70°C (-40 to 158°F)	IP Rating	IP 65	Shock	10 G acceleration peak to peak
Operating	-10 to 55°C (14 to 131°F)								
Storage	-40 to 70°C (-40 to 158°F)								
IP Rating	IP 65								
Shock	10 G acceleration peak to peak								